

# Possums Over the Moon

## CELLO CONTENTS

1. Pluck a Duck
2. Wind Chimes
3. Easy Peasy
4. Big Top
5. Lullaby
6. Bats in the Belfry
7. Shining Star
8. Bananas
9. Halloween
10. Sea Shanty
11. Round the Twist
12. Far Far Away
13. Mazel Tov!
14. Christmas Bells
15. Possums in Space

# 1. Pluck a Duck

CELLO

**Allegro moderato**

(2 bars intro)

Eugenie Teychenné

**A**

*pizz*

3 *mf*

7

**B**

11

**4**

**C**

15

21

25

# 2. Wind Chimes

CELLO

**Andante**

(4 bars intro)

Eugenie Teychenné

**A**

*pizz*

5 *p*

**4**

9

**B**

13

**4**

17

**C**

21

25 *pp*

28

# 3. Easy Peasy

CELLO

**Allegro moderato**

(2 bars intro)

Eugenie Teychenné

**A**

Musical notation for section A, measures 3-6. The key signature is one flat (Bb) and the time signature is 4/4. The notation starts with a bass clef and a 4/4 time signature. A square symbol is placed above the first measure. The notes are: G2 (quarter), A2 (quarter), Bb2 (quarter), C3 (quarter), D3 (half), E3 (half), F3 (quarter), G3 (quarter), A3 (quarter), Bb3 (quarter), C4 (half), D4 (half). The dynamic marking *mf* is placed below the first measure. A '3' is written below the first measure.

Musical notation for section A, measures 7-10. The notes are: G2 (quarter), A2 (quarter), Bb2 (quarter), C3 (quarter), D3 (half), E3 (half), F3 (quarter), G3 (quarter), A3 (quarter), Bb3 (quarter), C4 (half), D4 (half).

**B**

Musical notation for section B, measures 11-12. The notation shows two measures of rests, each marked with a '2' above the staff, indicating a two-measure rest.

Musical notation for section A, measures 15-18. The notes are: G2 (quarter), A2 (quarter), Bb2 (quarter), C3 (quarter), D3 (half), E3 (half), F3 (quarter), G3 (quarter), A3 (quarter), Bb3 (quarter), C4 (half), D4 (half). A square symbol is placed above the first measure. A '2' is written above the last measure, indicating a two-measure rest.

**C**

Musical notation for section C, measures 19-22. The notes are: G2 (quarter), A2 (quarter), Bb2 (quarter), C3 (quarter), D3 (half), E3 (half), F3 (quarter), G3 (quarter), A3 (quarter), Bb3 (quarter), C4 (half), D4 (half). A square symbol is placed above the first measure.

Musical notation for section C, measures 23-26. The notes are: G2 (quarter), A2 (quarter), Bb2 (quarter), C3 (quarter), D3 (half), E3 (half), F3 (quarter), G3 (quarter), A3 (quarter), Bb3 (quarter), C4 (half), D4 (half). The piece ends with a double bar line.

# 4. Big Top

CELLO

**Allegro**

(1 bar intro)

Eugenie Teychenné

**A**

2 *f*

4 *p*

**B**

6 *mf*

8

**C**

10 *f*

12 *p*

# 5. Lullaby

CELLO

**Grazioso**

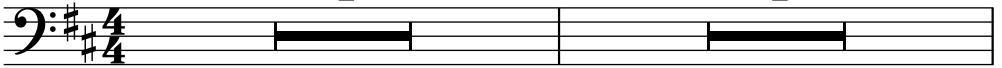
(2 bars intro)

Eugenie Teychenné

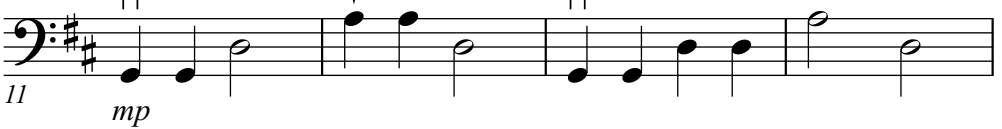
**A**

**4**

**4**



**B**



**C**



# 6. Bats in the Belfry

CELLO

**Con brio**

(2 bars intro)

Eugenie Teychenné

**A**

3 *f*

7

**B**

11 **4**

15 *mf*

**C**

19 *f*

23

# 7. Shining Star

CELLO

**Espressivo**

(2 bars intro)

Eugenie Teychenné

**A**

3 *mp*

7

**B**

11 *mf*

15

**C**

19

**rall.** . . . . .

23



# 8. Bananas

CELLO

**Allegro**

(2 bars intro)

Eugenie Teychenné

**A** pizz 1

3  
*mf*

7

**B** arco 1 2

11  
*mf*

15

**C**

19  
*f*

23

# 9. Halloween

CELLO

**Allegretto**

(2 bars intro)

Eugenie Teychenné

**A** pizz 1

3 *mp*

7

**B** arco 1

11

15

**C**

19 *mf*

23

**D** pizz

27 *mp*

31

# 10. Sea Shanty

**Allegro**

(2 bars intro)

CELLO

Eugenie Teychenné

**A**

3 *mf*

7

**B**

11 *f*

**C**

19 *mf*

23

**D**

27 *f*

31 *poco rall.*

# 11. Round the Twist

Vivace

CELLO

Eugenie Teychenné

(2 bars intro)

**A**

3/11

*mf*

7/15

**B**

17

21

**C**

25

29

**D**

33

37

# 12. Far Far Away

CELLO

**Espressivo**

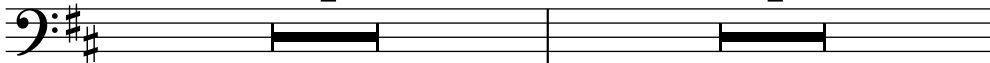
(2 bars intro)

Eugenie Teychenné

**A**

4

4



3

**B**

3

1 0

1 0



11

*mp*

4

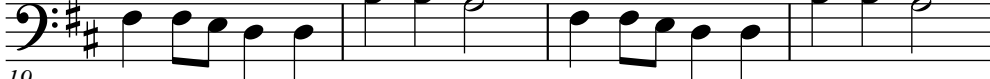
3



15

**C**

□

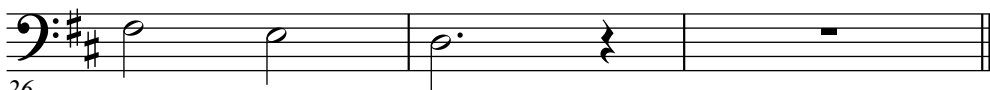


19



23

**poco rall.** . . . . .



26

# 13. Mazel Tov!

**Allegro moderato**

(2 bars intro)

**CELLO**

Eugenie Teychenné

**A** **4** **4**

**B** 3 0 1 4 1 3 4 0 4 3  
*mf*

**C**

**D** 1.

**E** 2. *f*

37 1. 2.

# 14. Christmas Bells

Andante

(2 bars intro)

CELLO

Eugenie Teychenné

**A**

8

tutti **B** pizz

**C**

arco

1.

2.

19/23

*mf*

**D**

3

4

0

4

1

27

*mp*

**E**

1.

2.

35/39

*mf*

**F**

43

*f*

48



# 15. Possums in Space

Maestoso  
(2 bars intro)

CELLO

Eugenie Teychenné

**A** 7

**B** 1 4 3 1

**C**

**D**

**E**

3 *mf*

14

19 *f*

24 *mf*

29

35 *f*


39

44



# Cello Note Chart


A String



0 1 3 4

A B C sharp D


D String



0 1 3 4

D E F sharp G

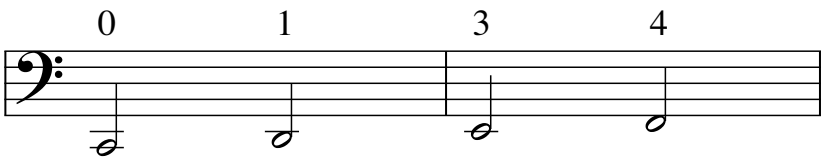
G String



0 1 3 4

G A B C

C String



0 1 3 4

C D E F